





INOX - IVR 664




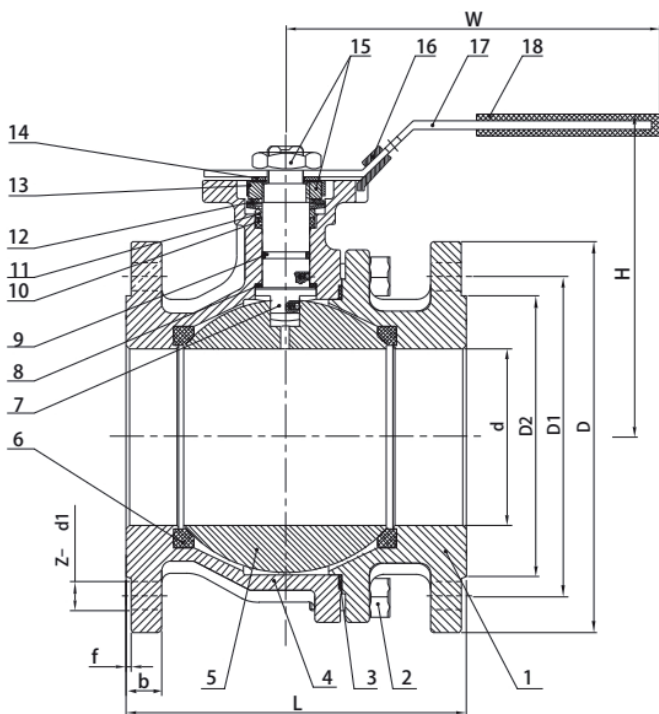
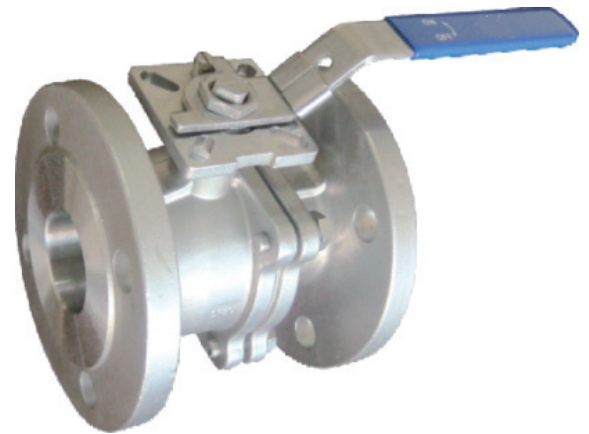
 Valvola a sfera in due pezzi in acciaio inox AISI 316
- attacchi flangiati - flangia ISO 5211

 Two-piece ball valve in stainless steel AISI 316 -
flanged connections - ISO 5211 flange

 Zweiteiliger Kugelhahn aus rostfreiem Stahl AISI 316
mit Flanschanschlüssen - Flansche ISO 5211

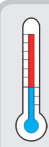
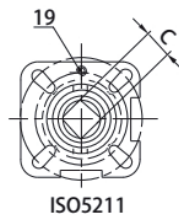
 Vanne à boisseau sphérique à deux pièces en acier inox AISI 316
- fixations bridées - bride ISO 5211

 Двухсоставной полнопроходной шаровой кран из
нержавеющей стали AISI 316 - фланцевые соединения -
фланец ISO 5211



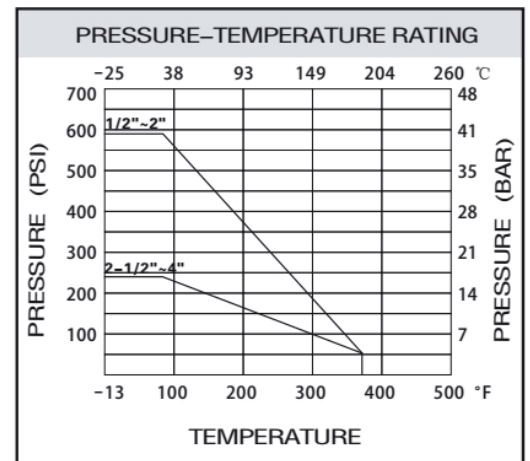
Size 
DN15 - DN50 40 bar
DN65 - DN100 16 bar

Max
+180° C
Min
-25 C

DIMENSION LIST

SIZE	d	L	D	D1	D2	b	f	H	W	C	ISO5211	Z-Ød1	N·m	Kgs
DN15	15	115	95	65	45	16	2	82	117	9	F03/F04	4-Ø14	5	2.08
DN20	20	120	105	75	58	18	2	87	117	9	F03/F04	4-Ø14	8	2.80
DN25	25	125	115	85	68	18	2	90	164	11	F04/F05	4-Ø14	10	3.73
DN32	32	130	140	100	78	18	2	100	164	11	F04/F05	4-Ø18	14	5.18
DN40	38	140	150	110	88	18	3	116	203	14	F05/F07	4-Ø18	18	6.56
DN50	50	150	165	125	102	20	3	125	203	14	F05/F07	4-Ø18	25	8.90
DN65	65	170	185	145	122	18	3	154	255	17	F07/F10	4-Ø18	48	13.40
DN80	76	180	200	160	138	20	3	164	255	17	F07/F10	8-Ø18	75	18.20
DN100	94	190	220	180	158	20	3	180	302	17	F07/F10	8-Ø18	110	25.70



MATERIAL LIST

ITEM	PART	MATERIAL	QTY
1	Cap	CF8M	1
2	Bolt	SS304	4 (8)
3	Body Gasket	PTFE	1
4	Body	CF8M	1
5	Ball	SS316	1
6	Ball Seat	R-PTFE (15%)	2
7	Stem	SS316	1
8	Thrust Washer	PTFE	1
9	O-ring	VITON	1
10	Stem Packing	PTFE	1
11	Packing Ring	SS304	1
12	Belleville Washer	SS301	2
13	Nut Stopper	SS304	1
14	Plate Washer	SS304	1
15	Nut	SS304	2
16	Lock Device	SS304	1
17	Handle	SS304	1
18	Plastic Cover	Plastic	1
19	Stop Pin	SS304	1