





INOX - IVR 657



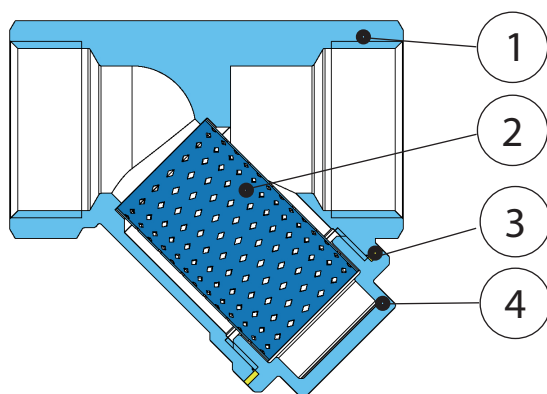
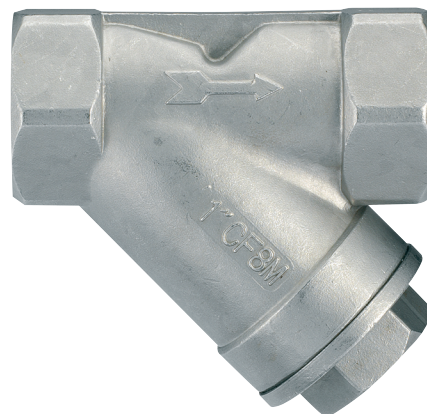
 Filtro a Y a passaggio totale in acciaio inox AISI 316 - attacchi F/F

 Full bore check valve in stainless steel AISI 316 - threaded ends F/F

 Full bore check valve in stainless steel AISI 316 - threaded ends F/F

 Filtre en Y à passage total en acier inox AISI 316 - fixations F/F

 Полнопроходной фильтр "Y" из нержавеющей стали - Соединения В/В



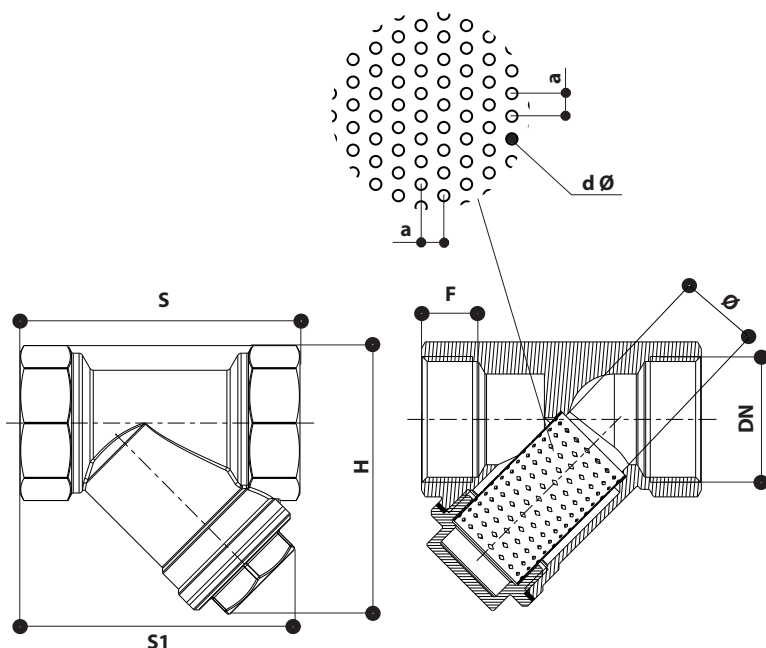
Estremità filettate
UNI ISO 228/1

Max
+200° C
Min
-20° C

Size
1/4" - 4" 40 bar



N	DENOMINAZIONE PART NAME	MATERIALE MATERIAL	TRATTAMENTO TREATMENT
1	Corpo - Body	Acciaio inox AISI 316 Stainless steel AISI 316	
2	Filtro - Filter	Acciaio inox AISI 316 Stainless steel AISI 316	
3	Guarnizione - Gasket	PTFE	
4	Tappo - Plug	Acciaio inox AISI 316 Stainless steel AISI 316	



DN	Ø	S	S1	H	H	a	dØ
1/4"	10	64	64	42	43	2	1
3/8"	12	64	64	42	43	2	1
1/2"	15	64	64	42	45	2	1
3/4"	20	80	81	50	52	2	1
1"	25	90	95	58	68	2	1
1 1/4"	32	106	106	52	70	2	1
1 1/2"	40	119	117	72	80	2	1
2"	50	140	138	81	98	2	1

DIMENSIONI - DIMENSIONS (mm)

Tutte le caratteristiche tecniche dei prodotti sono soggette a modifiche senza preavviso - All product's technical specifications are subject to modification without prior notice